

Open End Rivets

Non-structural blind breakstem rivet designed for a wide range of applications. Available in a variety of materials and combinations.



Key features and benefits

- Cost effective standard rivet
- Installed quickly and easily
- Design of the stem head ensures positive retention after installation

Specifications

Sizes:

3/32" – 1/4"

(2.4 mm – 6.4 mm)

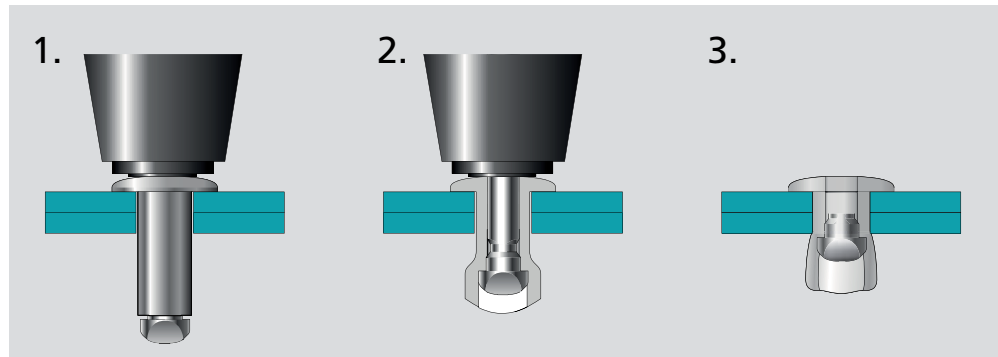
Materials:

Aluminum, Steel,
Stainless Steel, Copper,
Nickel Copper Alloy

Head Styles:

Dome, Large Flange,
Countersunk

Typical placing sequence



Please visit our website for fastener placing animations and technical data.

Assembly applications

- White goods
- Automotive
- Building & construction
- Furniture
- Lighting
- Hearth, grill
- Patio furniture
- Renewable energies

Automotive



White goods



Snowmobile trailer



Lighting equipment



Conference room furnishings



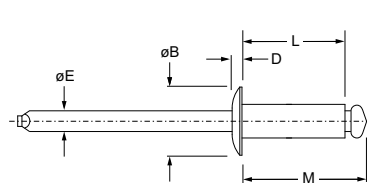
Gutter



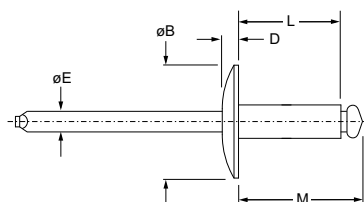


English	Français	Deutsch	Italiano	Español
Body: Aluminum* Natural	Corps: Aluminium* Brut	Hülse: Aluminium* Unbehandelt	Corpo: Alluminio* Nessuna finitura	Cuerpo: Aluminio* Natural
Stem: Steel Protective coating	Tige: Acier Revêtement de protection	Dorn: Stahl Schutzüberzug	Gambo: Acciaio Rivestimento protettivo	Vástago: Acero Revestimiento preservador

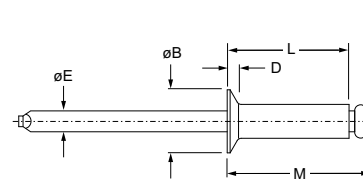
*: 5056



AD ■ BS
Dome head
Tête bombée / Flachrundkopf /
Testa tonda / Cabeza alomada



AD ■ BS LF
Large flange
Tête large / Flachrundkopf, extragroß /
Testa larga / Cabeza ancha



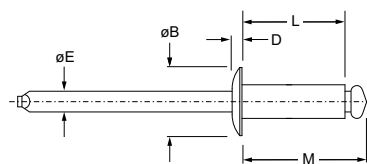
AK ■ BS
Countersunk
Tête fraisée / Senkkopf /
Testa svasata / Cabeza avellanada

Ø nom.	min. max.		min. max.		L ref.	M ref.	ØE ref.	AD ■ BS			AD ■ BS LF			AK ■ BS		
								ØB max.	D max.	Part No.	ØB max.	D max.	Part No.	ØB max.	D max.	Part No.
3/32" (2.4)	.031 (0.8)	.125 (3.2)	.097 (2.46)	.100 (2.54)	.225 (5.7)	.325 (8.3)	.057 (1.5)	.198 (5.1)	.032 (0.9)	32						
	.126 (3.2)	.250 (6.4)			.350 (8.9)	.450 (11.4)				34						
1/8" (3.2)	.032 (0.8)	.062 (1.6)	.129 (3.28)	.133 (3.38)	.188 (4.8)	.308 (7.8)	.076 (1.9)	.262 (6.7)	.040 (1.1)	41	.390 (10.0)	.065 (1.7)	42	.233 (6.0)	.051 (1.3)	42
	.063 (1.6)	.125 (3.2)			.250 (6.4)	.370 (9.4)				42						
	.126 (3.2)	.187 (4.8)			.313 (8.0)	.433 (11.0)				43						
	.188 (4.8)	.250 (6.4)			.375 (9.5)	.495 (12.6)				44						
	.251 (6.4)	.312 (7.9)			.438 (11.1)	.558 (14.2)				45						
	.313 (7.9)	.375 (9.5)			.500 (12.7)	.620 (15.7)				46						
	.376 (9.5)	.500 (12.7)			.625 (15.9)	.745 (18.9)				48						
	.501 (12.7)	.625 (15.9)			.750 (19.1)	.870 (22.1)				410						
5/32" (4.0)	.063 (1.6)	.125 (3.2)	.160 (4.06)	.164 (4.17)	.275 (7.0)	.415 (10.5)	.095 (2.4)	.328 (8.4)	.047 (1.2)	52	.488 (12.4)	.075 (1.9)	54	.296 (7.6)	.063 (1.6)	52
	.126 (3.2)	.187 (4.8)			.338 (8.6)	.478 (12.1)				53						
	.188 ¹⁾ (4.8) ¹⁾	.250 (6.4)			.400 (10.2)	.540 (13.7)				54						
	.251 (6.4)	.375 (9.5)			.525 (13.3)	.665 (16.9)				56						
	.376 (9.5)	.500 (12.7)			.650 (16.5)	.790 (20.1)				58						

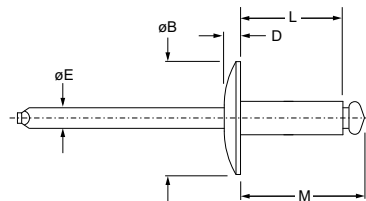
dimensions in inches and (mm) / en pouces et (millimètre) / alle Maße in Zoll und (mm) / in pollici e (millimetri) / en pulgadas y (milímetros)
1) AK 54 BS: .126 (3.2)

Open End AD BS / AK BS Series

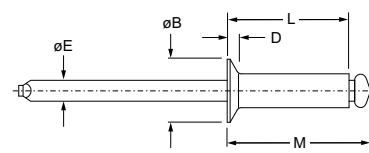
Aluminum / Steel



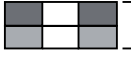

AD ■ BS
Dome head
Tête bombée / Flachrundkopf /
Testa tonda / Cabeza alomada



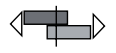

AD ■ BS LF
Large flange
Tête large / Flachrundkopf, extragroß /
Testa larga / Cabeza ancha



AK ■ BS
Countersunk
Tête fraisée / Senkkopf /
Testa svasata / Cabeza avellanada

Ø nom.					L ref.	M ref.	ØE ref.	AD ■ BS			AD ■ BS LF			AK ■ BS		
	min.	max.	min.	max.				ØB max.	D max.	Part No. ■	ØB max.	D max.	Part No. ■	ØB max.	D max.	Part No. ■
3/16" (4.8)	.063 (1.6)	.125 (3.2)	.192 (4.88)	.196 (4.98)	.300 (7.6)	.460 (11.7)	.114 (2.9)	.393 (10.0)	.055 (1.4)	62	.650 (16.6)	.092 (2.4)	62	.363 (9.3)	.071 (1.8)	
	.126 (3.2)	.250 (6.4)			.425 (10.8)	.585 (14.9)				64			64			
	.251 (6.4)	.375 (9.5)			.550 (14.0)	.710 (18.0)				66			66			
	.376 (9.5)	.500 (12.7)			.675 (17.2)	.835 (21.2)				68			68			
	.501 (12.7)	.625 (15.9)			.800 (20.3)	.960 (24.4)				610			610			
	.626 (15.9)	.750 (19.1)			.925 (23.5)	1.085 (27.6)				612			612			
	.751 (19.1)	.875 (22.2)			1.050 (26.7)	1.210 (30.7)				614			614			
	.876 (22.3)	1.000 (25.4)			1.175 (29.8)	1.335 (33.9)				616			616			
1/4" (6.4)	.063 (1.6)	.250 (6.4)	.257 (6.53)	.261 (6.63)	.475 (12.1)	.710 (18.0)	.151 (3.8)	.525 (13.4)	.073 (1.85)	84						
	.251 (6.4)	.375 (9.5)			.600 (15.2)	.835 (21.2)				86						
	.376 (9.5)	.500 (12.7)			.725 (18.4)	.960 (24.4)				88						
	.501 (12.7)	.625 (15.9)			.850 (21.6)	1.085 (27.6)				810						
	.626 (15.9)	.750 (19.1)			.975 (24.8)	1.210 (30.7)				812						
	.876 (22.3)	1.000 (25.4)			1.225 (31.1)	1.460 (37.1)				816						

dimensions in inches and (mm) / en pouces et (millimètre) / alle Maße in Zoll und (mm) / in pollici e (millimetri) / en pulgadas y (milímetros)

Ø		
nom.	lbf (kN) ²⁾	lbf (kN) ²⁾
3/32" (2.4)	125 (0.57)	175 (0.78)
1/8" (3.2)	210 (0.93)	325 (1.45)
5/32" (4.0)	340 (1.51)	490 (2.18)
3/16" (4.8)	445 (1.98)	720 (3.20)
1/4" (6.4)	890 (3.96)	1200 (5.34)

2) typical values / valeurs moyennes / typische Werte / Valori tipici / valores típicos